



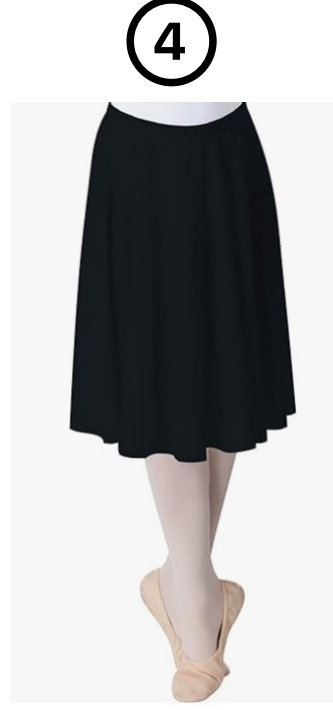
# IDAC FEMALE DRESS CODE

## Rehearsal & Performance Necessities:

IDAC students in Collective and Clogging classes are required to purchase the following items for participation in the semester. If there is a financial concern please contact the director for information about scholarship options.

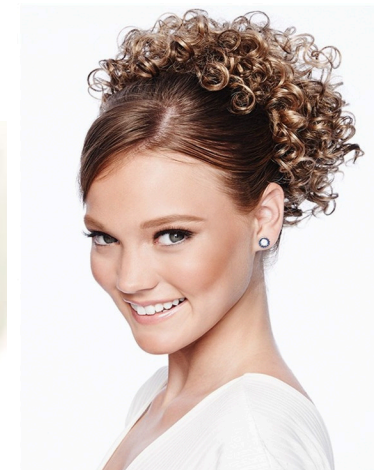
### Female Dress Code:

#### REHEARSAL



1. IDAC black or grey t-shirt may be worn over leotard.
2. Leotard must be worn so instructor can see body alignment and posture: [Girl's black leo](#), [Women's black leo](#).
3. Choice of bottoms: leggings, biker shorts, or tights.
4. Black folk dance skirt is required for Elementary Collective and above: [Girl's black folk dance skirt size 3-6](#), [Girl's black folk dance skirt size 8-16](#), [Women's folk-dance skirt](#), and [one other option for Women](#).
5. Rehearsal hair should be up in a bun or braids and off of the face.
6. Athletic shoes are required for rehearsal warm-up.
7. Black Character shoes are required for Junior Collective and above: [Women's black character shoes](#).
8. Black ballet shoes are required for Foundation and Elementary collective: [Girl's black ballet shoes](#) Any soft dance shoe (jazz or ballet) are permitted for Junior and Senior Collective.
9. Clogging shoes are required after first semester. Order by calling Bonnie Steele at 1 (801) 414-9003 to purchase a pair for approximately \$150.

#### PERFORMANCE



1. Changing leotard is to be worn under IDAC costumes: [Girl's changing leo](#), [Women's changing leo](#).
2. Black Leotard is used on occasion for specific costumes. Please purchase this brand: [Girl's black leo](#), [Women's black leo](#).
3. Transition tights are required for every class but the color will be designated by instructor: [Transition tights](#).
4. If a bra is worn it must be nude colored.
5. Curly wigs are required for IDAC performance. Select one from *POP Cheer Dance Curls* brand that matches hair color: [Choose your wiglet color](#).
6. *Rimmel Provocalips* liquid lipstick in one of the following shades is required to prevent stains on costumes: [Bright color](#), [Dark color](#). Please read and follow instructions on how to wear it!
7. Black ballet shoes are required for Foundation and Elementary collective: [Girl's black ballet shoes](#).
8. Black character shoes are required for Junior Collective and above: [Women's black character shoes](#). (No T-strap shoes)
9. Clogging shoes are required after first semester. Order by calling Bonnie Steele at 1 (801) 414-9003 to purchase a pair for approximately \$150.